

COGNITA

BSB | The British School
of Barcelona

Health and Safety Policy

SPAIN

September 2021

THE POLICY

Issue Date: 24 September 2021

Status: Version 1/2021

The British School of Barcelona Castelldefels; Carrer Ginesta 26, 08860, Castelldefels
 The British School of Barcelona Castelldefels Nexus; Carrer Ginesta 2-10, 08860, Castelldefels
 The British School of Barcelona Sitges; Passeig Isaac Albéniz s/n, 08870, Sitges
 The British School of Barcelona Barcelona BSB City; Carrer de l'Esperança, 32, 08017, Barcelona
 ("the School")

HEALTH AND SAFETY POLICY

PART ONE - STATEMENT OF INTENT

INTRODUCTION

The school believes that ensuring the health and safety of staff, pupils and visitors and positively promoting health and safety is essential to the success of the school.

We are committed to:

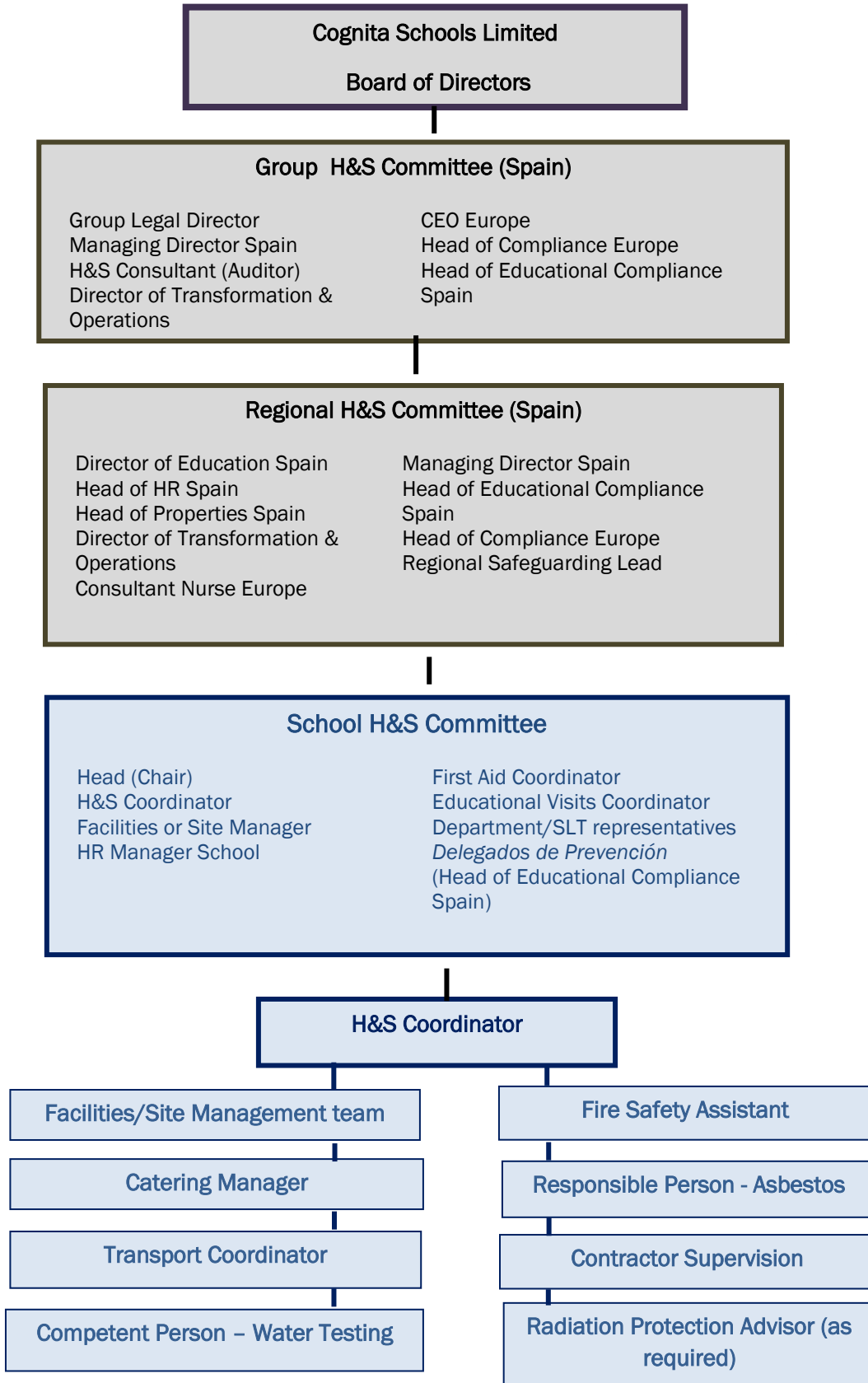
- Providing a safe and healthy working and learning environment on and off site
- Preventing accidents and work related ill health
- Providing safe premises (including access and egress), plant and equipment
- Maintaining safe systems of work among staff (including teaching and non-teaching staff, peripatetic workers and students undertaking work experience) and pupils
- Assessing and controlling risks from curriculum and non-curriculum work activities
- Providing a safe means of use, handling, storage and transportation of articles and substances
- Formulating effective procedures for use in case of fire and/or the need for emergency evacuation of the school
- Providing adequate information, instruction, training and supervision to staff and pupils
- Consulting with staff, pupils and their representatives on health and safety matters
- Setting targets and objectives regarding health and safety performance to develop a culture of continuous improvement
- The regular monitoring and review of health and safety procedures and systems (to include risk assessments, accident records and health and safety related issues and complaints etc)
- Ensuring adequate welfare facilities exist throughout the school
- Ensuring adequate resources are made available for health and safety issues, so far as is reasonably practicable.

The school will establish a Health and Safety Management System to ensure the above commitments can be met. Cognita Schools Ltd, the Head, staff and pupils will play their part in its implementation.

Name: Germà Rigau
 Managing Director Spain
 Date

Name:
 School Head

Cognita Schools - Health & Safety Management



PART TWO - ORGANISATION

INTRODUCTION

The Board of Directors of Cognita Schools Ltd are responsible for ensuring the implementation of this Health and Safety Policy.

The Directors delegate responsibility for health and safety management to the Director of Education Spain and to their Head.

In order to ensure compliance with the law and the school's Statement of Intent the Head will arrange appropriate delegation of health and safety management issues as detailed in this part of the Policy.

HEAD WILL ENSURE:

- The promotion of a health and safety culture within the school and on off-site visits in order to prevent accidents, work-related ill health and damage to property.
- That a clear written health and safety policy is developed, implemented and communicated in accordance with legal obligations, in accordance with BSO standards and other appropriate guidance and guidance from Cognita.
- The effective management of health, safety and welfare of staff, pupils, contractors, visitors and others so far as is reasonably practicable. This policy applies to all pupils, including those in the Early Years.
- Adequate control of health and safety risks arising out of the school's activities.
- The provision and maintenance of safe premises, plant and equipment.
- Responsibilities for health, safety and welfare are allocated to specific people and those persons are formally informed of these responsibilities.
- Persons to whom health and safety responsibilities are delegated are competent to do their tasks i.e. that they have sufficient experience, knowledge and training to perform the tasks required of them and have sufficient time and resources to undertake the role.
- The provision of adequate information, instruction, supervision and training for staff and pupils and others such as contractors, where appropriate.
- The establishment of a school H&S Committee which is representative of the operation and structure of the school and which meets at least Termly.
- That arrangements are in place for the effective consultation with staff, nominated trade union representatives and pupils regarding health and safety matters.
- Clear procedures are created for risk assessment, the development of safe working practices and reporting of accidents, incidents, dangerous occurrences and near misses.
- The formulation of effective procedures for use in case of fire and/or the need for emergency evacuation of the school.
- Sufficient funds are set aside for health and safety management in accordance with the Statement of Intent.
- The school complies with its reporting and record keeping obligations.

- Accidents, incidents, absence and complaints pertaining to matters of health and safety are properly investigated, if required, and that the school co-operates with the relevant enforcement agencies such as the local authority and fire authority, if required.
- Health and safety performance is measured both actively and reactively and measures are put in place to monitor the effectiveness of the health and safety arrangements in controlling identified risks.
- The school's health and safety policy is reviewed annually and in light of any significant change throughout the school academic year. Performance is monitored regularly and reports on the health and safety performance of the school are prepared for the Chair of the School Governance Panel.

SCHOOL H&S CO-ORDINATOR WILL ENSURE:

- The promotion of a positive health and safety culture within the School.
- The implementation of a clear, written School Health and Safety Policy that has been developed from the approved Cognita SPAIN model policy and is communicated and regularly updated in accordance with legal obligations (alongside other appropriate guidance and updates from the Cognita Group).
- Maintained liaison with other specialist health, safety and fire safety roles appointed within the School, to co-ordinate compliance actions and provide a central point of contact [please note Cognita SPAIN H&S Line Management structure].
- The dissemination of information relevant to health and safety compliance ensuring all compliance duty holders and other key parties within the School are included.
- The co-ordination of the School's H&S Meetings, ensuring these are conducted in accordance with the Terms of Reference for school H&S committee.
- Central co-ordination and access as a key point of contact for any accident, incident or near miss occurrence. Ensuring thorough investigation, review, recording of information and escalation has been conducted and final actions closed out.
- Liaison with all School Departments to ensure risk assessments are produced for tasks/activities within such areas, with information provided to relevant parties and regular review undertaken.
- Support as the key contact in order to co-operate with any enforcement agency such as the local authority and fire authority, as required.
- Systems are established to allow staff (both teaching and non-teaching) to receive adequate information, supervision and training (both induction training and ongoing training) in health and safety matters relevant to their specialist area by liaising with the School identified Training Co-ordinator.
- Prompt evaluation and, where appropriate, take action on health, safety and welfare concerns and issues which are reported to them, or refer them to the Head.

- Routine monitoring is established at the School including both internal and external audits and inspections, to ensure ongoing H&S compliance is reviewed and any actions raised are appropriately dealt with.
- Termly updates are provided to the School Safeguarding Governance committee detailing the School's progress with identified compliance issues and areas of focus.

HEADS OF DEPARTMENT AND MEMBERS OF THE SENIOR MANAGEMENT TEAM WILL ENSURE:

- Application of the school's Health and Safety Policy to their own department or area of specialism.
- Development and dissemination of a departmental/team health and safety policy, if appropriate, detailing the particular roles and responsibilities for health and safety in that specialist area and the organisational arrangements in place for achieving this.
- Familiarisation with current Regulations, Codes of Practice and Guidance appropriate to their specialist areas and with this Policy (this may require reading trade journals, CIS, ESIS, British Standards, CLEAPSS).
- Risk assessments of the activities for which they are responsible are carried out and reviewed as required.
- All staff under their control (to include supply teachers and work experience students) receive adequate information, supervision and training (both induction training and ongoing training) in health and safety matters relevant to their specialist area.
- All statutory notices and appropriate safety signs are displayed in their specialist area.
- Adequacy of first aid provisions, protective clothing and equipment, registers and log books are available for use in their specialist area.
- Machinery, equipment and substances are accompanied by adequate information on use and that use is restricted to named individuals where necessary for reasons of health and safety.
- Prompt evaluation and where appropriate take action on health, safety and welfare concerns and issues which are reported to them, or refer them to the Head.
- Regular inspections are conducted of their areas of responsibility to ensure that equipment, furniture and activities are safe and record these inspections where required.
- So far as is reasonably practicable, that the provision of sufficient information, instruction, training and supervision to enable other staff and pupils to avoid hazards and contribute positively to their own health and safety.
- Investigation of any accidents, which occur within their sphere of responsibility.
- Monitoring of the health and safety of his/her department or area of responsibility (including records of risk assessments, health and safety related issues and complaints, and records

of accidents) regularly and prepare an annual report for the Head on the health and safety performance of his/her department or area of responsibility.

- Inclusion at the health and safety at departmental/team meetings.

CLASS TEACHERS WILL ENSURE:

- Co-operation with the Head, their Head of Department and their Line Manager on health and safety matters.
- Taking reasonable care for their own health and safety and for that of staff, pupils, volunteer helpers and visitors under their supervision.
- Familiarity with this Policy and the procedures in respect of fire, first aid and other emergencies, and to carry them out as required.
- Exercising effective supervision of pupils and give clear oral and written instructions and warnings to pupils as often as necessary.
- Following any safe working procedures issued for their subject area and generally.
- Provision and request for the use of appropriate protective equipment, clothing and guards where necessary and ensure they are used as required.
- Making recommendations to their Head or Head of Department on health and safety equipment and on additions or necessary improvements to plant, tools, equipment or machinery.
- Integration of all relevant aspects of safety into the teaching process and, where necessary, provide special lessons on health and safety in line with Curriculum requirements for safety education.
- Avoidance of introducing personal items of equipment (electrical or mechanical) into the school without prior authorisation.
- Reporting all accidents, defects and dangerous occurrences to their Head or Head of Department.

NON-TEACHING STAFF WILL ENSURE:

- Co-operation with the Head, their Head of Department and their Line Manager on health and safety matters.
- Acting with due care for the health, safety and welfare of themselves, other staff and other persons at the School.
- Exercising effective supervision over those for whom they are responsible.
- Familiarity with the contents of this Policy and, in particular, the procedures in respect of fire, first aid and other emergencies.

- Observation of all instructions on health and safety issued by Cognita, the school or any other person delegated to be responsible for a relevant aspect of health and safety at the school.
- Implementation of safe working practices which comply with the approved Cognita and school policies and procedures and set a good example personally.
- Acting in accordance with any specific health and safety training received.
- Exercising good standards of housekeeping and cleanliness.
- Defects are reported to Line Management and offices, general accommodation and vehicles are kept tidy and in good order at all times.
- Tools and equipment are in good condition (and not use them otherwise), ensure that they are appropriate to that use and that adequate instructions for their use are provided.
- Reporting of any defects in tools and equipment and actual or potential hazards to their Line Manager or the Head and ensure that defective equipment is immediately taken out of use until it has been made safe.
- Use of protective clothing and safety equipment provided (when appropriate) and ensure these are kept in good condition.
- Provision of instructions, warning notices and signs as appropriate.
- Reporting of all accidents in accordance with current procedure.
- Any accidents or incidents, dangerous occurrences or near misses are reported to the Head.
- Assistance in the investigation of any accident (or incident where personal injury could have arisen) and take appropriate corrective action.
- Where authorising work to be undertaken or authorising the purchase of equipment, the health and safety implications of such work or purchase are considered.
- If entrusted with responsibilities for specific aspects of health, safety and welfare they satisfy themselves that those responsibilities as appropriate are re-assigned in their absence. Such re-assignments must be approved by the employee's Line Manager.
- Minimisation of the occasions when an individual is required to work or study in isolation.
- No interference with or misuse of anything provided to safeguard their health and safety.
- Members of staff are expected to be vigilant at all times but particularly where there are vehicles on site and when activity is taking place at height.

PUPILS (IN ACCORDANCE WITH THEIR AGE AND APTITUDE) WILL ENSURE:

- Co-operation with the Head and staff on health and safety matters and in particular must follow the instructions of staff in the event of an emergency.
- Taking reasonable care for their own health and safety and that of others at the school.
- Observation of the school rules, standards of dress consistent with safety and/or hygiene.
- Use and not wilfully misuse, neglect or interfere with anything provided to safeguard their health and safety.
- Reporting of all health and safety concerns to the Head.

HIRERS:-

All hirers of the school must, in addition to the responsibilities of visitors below, ensure arrangements are made for checking the security and condition of the premises and equipment used after vacation by the hirer or his/her staff

VISITORS AND CONTRACTORS:-

All visitors and other users of the school premises (to include contractors, delivery people and visitors to the school) must:

- Co-operate with the with school on health and safety matters and in particular follow the instructions of staff in the event of an emergency.
- Observe the rules of the school.
- Ensure that they comply with the school's signing-in/out visitors' and/or contractors' procedures and the appropriate means of access to and egress from the school site and the host arrangements whilst on site.
- Ensure that they are familiar with the school's fire and emergency evacuation procedures.
- Ensure that they have adequate information about the premises, plant and equipment (if appropriate and including the location of asbestos containing materials where intrusive works are to be conducted).

HEALTH AND SAFETY POLICY

PART THREE – ARRANGEMENTS (PLANNING AND IMPLEMENTATION)

The following procedures and arrangements have been adopted to ensure compliance with the Statement of Intent.

The school should detail the organisational arrangements on the attached tables and should attach relevant documentation.

EMERGENCY & FIRST AID RELATED POLICIES AND PROCEDURES

School Policy and/or Guidance	Responsible Person / Department	Current Issue Date/Ref	Planned Review Date
Self Protection Plan <i>(Plan de Autoprotección o Plan de Emergencia)</i>	<i>Facility Manager</i>	<i>BSBC:sept 2019 BSBS: sept 2021 BSBN: sept 2019 BSBCity: BSBNStem Camp:</i>	<i>BSBC:sept 2023 BSBS: sept 2025 BSBN: sept 2023 BSBCity: BSBNStem Camp:</i>
Incident and Continuity Planning Toolkit	<i>H&S Coordinator</i>	<i>October 2021</i>	<i>October 2022</i>
Internal Emergency Protocols <i>(Evacuation and Lockdown Procedures)</i>	<i>H&S Coordinator</i>	<i>October 2021</i>	<i>October 2022</i>
Intimate Care Policy	<i>EYFS & Primary Headteacher</i>	<i>October 2021</i>	<i>October 2022</i>
First Aid Policy including Concussion	<i>H&S Coordinator</i>	<i>October 2021</i>	<i>October 2022</i>
First Aid Needs Assessment	<i>H&S Coordinator</i>	<i>October 2021</i>	<i>October 2022</i>
Prevention and Control of Infection and Communicable Diseases Procedures	<i>H&S Coordinator</i>	<i>October 2021</i>	<i>October 2022</i>
Serious Incident Reporting Procedure	<i>H&S Coordinator</i>	<i>October 2021</i>	<i>October 2022</i>
Supporting Pupils with Medical Conditions Policy	<i>H&S Coordinator</i>	<i>October 2021</i>	<i>October 2022</i>
Whole School Food incl Dietary Requirements	<i>H&S Coordinator Senior Business Manager</i>	<i>October 2021</i>	<i>October 2022</i>

FACILITIES RELATED POLICIES AND PROCEDURES

STANDARD REQUIRED FACILITIES RELATED POLICIES			
Cognita Approved Policy and/or Guidance	Responsible Person / Department	Current Issue Date/Ref	Planned Review Date
Adverse Weather Policy	H&S Coordinator Headteacher	October 2021	October 2022
Asbestos Management Plan	Facility Manager	October 2021	October 2022
Caretaking and Site Staff Policy	Facility Manager	October 2021	October 2022
Catering Policy	H&S Coordinator Senior Business Manager	October 2021	October 2022
Control of Contractors Policy	Human Resources	October 2021	October 2022
COSHH (Control of Substances Hazardous to Health) Policy	Facility Manager Science Technician	October 2021	October 2022
Display Screen Equipment Policy	Human Resources	October 2021	October 2022
Electrical Safety Policy	Facility Manager	October 2021	October 2022
Legionella Policy	Facility Manager	October 2021	October 2022
Lone Working Policy	Human Resources	October 2021	October 2022
Machinery, Plant and Equipment Policy	Facility Manager	October 2021	October 2022
Manual Handling and Lifting Policy	Human Resources	October 2021	October 2022
Risk Assessment Policy	H&S Coordinator	October 2021	October 2022
Premises Management Policy	Facility Manager	October 2021	October 2022
Security, Workplace Safety and Protection from Violence	H&S Coordinator Facility Manager	October 2021	October 2022
Sun Protection Policy	H&S Coordinator	October 2021	October 2022
Swimming Pools	H&S Coordinator Director of Sport and Physical Education	October 2021	October 2022
Terms of Reference for H&S Committee	H&S Coordinator	October 2021	October 2022
Transportation of Students and Staff Policy	School Transport Coordinator Senior Business Manager	October 2021	October 2022
Welfare Provisions (Facilities) Policy	Facility Manager	October 2021	October 2022
Working at Height Policy	Human Resources Facility Manager	October 2021	October 2022
ADDITIONAL FACILITIES POLICIES – SPECIFIC TO THE SCHOOL			
School Policy and/or Guidance	Responsible Person / Department	Current Issue Date/Ref	Planned Review Date

RISK ASSESSMENTS

STANDARD REQUIRED RISK ASSESSMENTS BSB Castelldefels			
Cognita Approved Policy and/or Guidance	Responsible Person / Department	Current Issue Date/Ref	Planned Review Date
Administration and Faculty Office Areas	H&S Coordinator Facility Manager	October 2021	October 2022
Administration of Medicines	H&S Coordinator School nurse	October 2021	October 2022
Art Class Rooms	HOD Art & Design Head of Music	October 2021	October 2022
Boiler Rooms and Fuel Tanks	H&S Coordinator Facility Manager	October 2021	October 2022
Changing rooms	Director of Sport and Physical Education	October 2021	October 2022
Cleaning Activities	H&S Coordinator Facility Manager	October 2021	October 2022
Contractors on Site	Human Resources	October 2021	October 2022
COVID 19	H&S Coordinator Headteacher	October 2021	October 2022
Design Technology Rooms	N/A	-	-
Early Years Classrooms	Deputy Head Teacher of Early Years and Primary Early Years Key Stage Leader	October 2021	October 2022
Eating Areas	H&S Coordinator Facility Manager	October 2021	October 2022
Electrically Powered Gates	H&S Coordinator Facility Manager	October 2021	October 2022
Events	H&S Coordinator	October 2021	October 2022
External Grounds and Play Areas	Rugby: Director of Sport and Physical Education (EY): Early Years Key Stage Leader (Pri): EYFS & Primary Headteacher (Sec): Head of Secondary and Pre- University	October 2021	October 2022
First Aid & Medical Room	H&S Coordinator School nurse	October 2021	October 2022
Food Technology Rooms	N/A	-	-
General Classrooms	EYFS & Primary Headteacher (Pri) James Petrie (Sec) Director of Nexus (Nex)	October 2021	October 2022
General Maintenance Activities	Facility Manager	October 2021	October 2022
IT Class Rooms	Director of Computing and IT	October 2021	October 2022

IT Technicians and Server Rooms	<i>IT Manager</i>	<i>October 2021</i>	<i>October 2022</i>
Kitchen	<i>H&S Coordinator Facility Manager</i>	<i>October 2021</i>	<i>October 2022</i>
Learning Support Classrooms	<i>Director of Student Support. Designated Safeguarding Lead Head of Learning Support for Secondary. Deputy Safeguarding Lead for Secondary</i>	<i>October 2021</i>	<i>October 2022</i>
Library	<i>N/A</i>	<i>-</i>	<i>-</i>
Lone Working	<i>Human Resources</i>	<i>October 2021</i>	<i>October 2022</i>
Music Rooms	<i>Secondary: Head of Music Primary: Arts Leader, EYFS & Primary Music Teacher</i>	<i>October 2021</i>	<i>October 2022</i>
Reception Areas	<i>H&S Coordinator Facility Manager</i>	<i>October 2021</i>	<i>October 2022</i>
Reprographics Areas	<i>IT Manager</i>	<i>October 2021</i>	<i>October 2022</i>
School Assembly Areas	<i>EYFS & Primary Headteacher + Head of Secondary and Pre-University</i>	<i>October 2021</i>	<i>October 2022</i>
School Transport	<i>School Transport Coordinator</i>	<i>October 2021</i>	<i>October 2022</i>
Science Laboratories and Preparation Rooms	<i>Senior Laboratory Technician</i>	<i>October 2021</i>	<i>October 2022</i>
Security Risk Assessment	<i>H&S Coordinator Facility Manager</i>	<i>October 2021</i>	<i>October 2022</i>
Sports Halls	<i>Rugby: Director of Sport and Physical Education</i>	<i>October 2021</i>	<i>October 2022</i>
Staffrooms	<i>H&S Coordinator Facility Manager</i>	<i>October 2021</i>	<i>October 2022</i>
Stairs and Communal Areas	<i>H&S Coordinator Facility Manager</i>	<i>October 2021</i>	<i>October 2022</i>
Storage Rooms	<i>H&S Coordinator Facility Manager</i>	<i>October 2021</i>	<i>October 2022</i>
Swimming Pools	<i>Director of Sport and Physical Education</i>	<i>October 2021</i>	<i>October 2022</i>
Toilets and Welfare Areas	<i>H&S Coordinator Facility Manager</i>	<i>October 2021</i>	<i>October 2022</i>
Traffic Management	<i>H&S Coordinator Facility Manager</i>	<i>October 2021</i>	<i>October 2022</i>
Use of Passenger Lifts	<i>H&S Coordinator Facility Manager</i>	<i>October 2021</i>	<i>October 2022</i>

STANDARD REQUIRED RISK ASSESSMENTS <i>BSB Sitges</i>			
Cognita Approved Policy and/or Guidance	Responsible Person / Department	Current Issue Date/Ref	Planned Review Date

Administration and Faculty Office Areas	<i>H&S Coordinator Facility Manager</i>	<i>October 2021</i>	<i>October 2022</i>
Administration of Medicines	<i>H&S Coordinator School nurse</i>	<i>October 2021</i>	<i>October 2022</i>
Art Class Rooms	<i>Music Teacher</i>	<i>October 2021</i>	<i>October 2022</i>
Boiler Rooms and Fuel Tanks	<i>H&S Coordinator Facility Manager</i>	<i>October 2021</i>	<i>October 2022</i>
Changing rooms	<i>EYFS and Primary PE Lead</i>	<i>October 2021</i>	<i>October 2022</i>
Cleaning Activities	<i>H&S Coordinator Facility Manager</i>	<i>October 2021</i>	<i>October 2022</i>
Contractors on Site	<i>Human Resources</i>	<i>October 2021</i>	<i>October 2022</i>
COVID 19	<i>H&S Coordinator Headteacher</i>	<i>October 2021</i>	<i>October 2022</i>
Design Technology Rooms	<i>Cooking Club Teacher</i>	<i>October 2021</i>	<i>October 2022</i>
Early Years Classrooms	<i>Phase One (EYFS & Year 1) Leader</i>	<i>October 2021</i>	<i>October 2022</i>
Eating Areas	<i>H&S Coordinator Facility Manager</i>	<i>October 2021</i>	<i>October 2022</i>
Electrically Powered Gates	<i>H&S Coordinator Facility Manager</i>	<i>October 2021</i>	<i>October 2022</i>
Events	<i>H&S Coordinator</i>	<i>October 2021</i>	<i>October 2022</i>
External Grounds and Play Areas	<i>EYFS & Primary Headteacher</i>	<i>October 2021</i>	<i>October 2022</i>
First Aid & Medical Room	<i>H&S Coordinator School nurse</i>	<i>October 2021</i>	<i>October 2022</i>
Food Technology Rooms	<i>Cooking Club Teacher</i>	<i>October 2021</i>	<i>October 2022</i>
General Classrooms	<i>EYFS & Primary Headteacher</i>	<i>October 2021</i>	<i>October 2022</i>
General Maintenance Activities	<i>Facility Manager</i>	<i>October 2021</i>	<i>October 2022</i>
IT Class Rooms	<i>Digital Leader</i>	<i>October 2021</i>	<i>October 2022</i>
IT Technicians and Server Rooms	<i>IT Manager</i>	<i>October 2021</i>	<i>October 2022</i>
Kitchen	<i>H&S Coordinator Facility Manager</i>	<i>October 2021</i>	<i>October 2022</i>
Learning Support Classrooms	<i>Inclusion Lead</i>	<i>October 2021</i>	<i>October 2022</i>
Library	<i>Learning Assistant</i>	<i>October 2021</i>	<i>October 2022</i>
Lone Working	<i>Human Resources</i>	<i>October 2021</i>	<i>October 2022</i>
Music Rooms	<i>Music Teacher</i>	<i>October 2021</i>	<i>October 2022</i>
Reception Areas	<i>H&S Coordinator Facility Manager</i>	<i>October 2021</i>	<i>October 2022</i>
Reprographics Areas	<i>IT Manager</i>	<i>October 2021</i>	<i>October 2022</i>

School Assembly Areas	<i>EYFS & Primary Headteacher</i>	<i>October 2021</i>	<i>October 2022</i>
School Transport	<i>School Transport Coordinator</i>	<i>October 2021</i>	<i>October 2022</i>
Science Laboratories and Preparation Rooms	<i>N/A</i>	<i>October 2021</i>	<i>October 2022</i>
Security Risk Assessment	<i>H&S Coordinator Facility Manager</i>	<i>October 2021</i>	<i>October 2022</i>
Sports Halls	<i>EYFS and Primary PE Lead</i>	<i>October 2021</i>	<i>October 2022</i>
Staffrooms	<i>H&S Coordinator Facility Manager</i>	<i>October 2021</i>	<i>October 2022</i>
Stairs and Communal Areas	<i>H&S Coordinator Facility Manager</i>	<i>October 2021</i>	<i>October 2022</i>
Storage Rooms	<i>H&S Coordinator Facility Manager</i>	<i>October 2021</i>	<i>October 2022</i>
Swimming Pools	<i>EYFS and Primary PE Lead</i>	<i>October 2021</i>	<i>October 2022</i>
Toilets and Welfare Areas	<i>H&S Coordinator Facility Manager</i>	<i>October 2021</i>	<i>October 2022</i>
Traffic Management	<i>H&S Coordinator Facility Manager</i>	<i>October 2021</i>	<i>October 2022</i>
Use of Passenger Lifts	<i>H&S Coordinator Facility Manager</i>	<i>October 2021</i>	<i>October 2022</i>

STANDARD REQUIRED RISK ASSESSMENTS <i>BSB Nexus</i>			
Cognita Approved Policy and/or Guidance	Responsible Person / Department	Current Issue Date/Ref	Planned Review Date
Administration and Faculty Office Areas	<i>H&S Coordinator Facility Manager</i>	<i>October 2021</i>	<i>October 2022</i>
Administration of Medicines	<i>H&S Coordinator School nurse</i>	<i>October 2021</i>	<i>October 2022</i>
Art Class Rooms	<i>N/A</i>	-	-
Boiler Rooms and Fuel Tanks	<i>H&S Coordinator Facility Manager</i>	<i>October 2021</i>	<i>October 2022</i>
Changing rooms	<i>N/A</i>	-	-
Cleaning Activities	<i>H&S Coordinator Facility Manager</i>	<i>October 2021</i>	<i>October 2022</i>
Contractors on Site	<i>Human Resources</i>	<i>October 2021</i>	<i>October 2022</i>
COVID 19	<i>H&S Coordinator Headteacher</i>	<i>October 2021</i>	<i>October 2022</i>
Design Technology Rooms	<i>N/A</i>	-	-
Early Years Classrooms	<i>N/A</i>	-	-
Eating Areas	<i>H&S Coordinator Facility Manager</i>	<i>October 2021</i>	<i>October 2022</i>
Electrically Powered Gates	<i>H&S Coordinator Facility Manager</i>	<i>October 2021</i>	<i>October 2022</i>
Events	<i>H&S Coordinator</i>	<i>October 2021</i>	<i>October 2022</i>
External Grounds and Play Areas	<i>Director of Nexus</i>	<i>October 2021</i>	<i>October 2022</i>

First Aid & Medical Room	H&S Coordinator School nurse	October 2021	October 2022
Food Technology Rooms	N/A	-	-
General Classrooms	Director of Nexus	October 2021	October 2022
General Maintenance Activities	Facility Manager	October 2021	October 2022
IT Class Rooms	N/A	-	-
IT Technicians and Server Rooms	IT Manager	October 2021	October 2022
Kitchen (Cafeteria)	H&S Coordinator Facility Manager	October 2021	October 2022
Learning Support Classrooms	N/A	-	-
Library	N/A	-	-
Lone Working	Human Resources	October 2021	October 2022
Music Rooms	N/A	-	-
Reception Areas	H&S Coordinator Facility Manager	October 2021	October 2022
Reprographics Areas	IT Manager	October 2021	October 2022
School Assembly Areas	Director of Nexus	October 2021	October 2022
School Transport	School Transport Coordinator	October 2021	October 2022
Science Laboratories and Preparation Rooms	N/A	-	-
Security Risk Assessment	H&S Coordinator Facility Manager	October 2021	October 2022
Sports Halls	N/A	-	-
Staffrooms	H&S Coordinator Facility Manager	October 2021	October 2022
Stairs and Communal Areas	H&S Coordinator Facility Manager	October 2021	October 2022
Storage Rooms	H&S Coordinator Facility Manager	October 2021	October 2022
Swimming Pools	N/A	-	-
Toilets and Welfare Areas	H&S Coordinator Facility Manager	October 2021	October 2022
Traffic Management	H&S Coordinator Facility Manager	October 2021	October 2022
Use of Passenger Lifts	H&S Coordinator Facility Manager	October 2021	October 2022

STANDARD REQUIRED RISK ASSESSMENTS BSB City			
Cognita Approved Policy and/or Guidance	Responsible Person / Department	Current Issue Date/Ref	Planned Review Date
Administration and Faculty Office Areas	H&S Coordinator Facility Manager	October 2021	October 2022
Administration of Medicines	H&S Coordinator School nurse	October 2021	October 2022

Art Class Rooms	<i>Music Teacher</i>	<i>October 2021</i>	<i>October 2022</i>
Boiler Rooms and Fuel Tanks	<i>H&S Coordinator Facility Manager</i>	<i>October 2021</i>	<i>October 2022</i>
Changing rooms	<i>PE Teacher</i>	<i>October 2021</i>	<i>October 2022</i>
Cleaning Activities	<i>H&S Coordinator Facility Manager</i>	<i>October 2021</i>	<i>October 2022</i>
Contractors on Site	<i>Human Resources</i>	<i>October 2021</i>	<i>October 2022</i>
COVID 19	<i>H&S Coordinator Headteacher</i>	<i>October 2021</i>	<i>October 2022</i>
Design Technology Rooms	<i>N/A</i>	<i>-</i>	<i>-</i>
Early Years Classrooms	<i>EY Teacher</i>	<i>October 2021</i>	<i>October 2022</i>
Eating Areas	<i>H&S Coordinator Facility Manager</i>	<i>October 2021</i>	<i>October 2022</i>
Electrically Powered Gates	<i>H&S Coordinator Facility Manager</i>	<i>October 2021</i>	<i>October 2022</i>
Events	<i>H&S Coordinator</i>	<i>October 2021</i>	<i>October 2022</i>
External Grounds and Play Areas	<i>EYFS & Primary Headteacher</i>	<i>October 2021</i>	<i>October 2022</i>
First Aid & Medical Room	<i>H&S Coordinator School nurse</i>	<i>October 2021</i>	<i>October 2022</i>
Food Technology Rooms	<i>EY Teacher</i>	<i>October 2021</i>	<i>October 2022</i>
General Classrooms	<i>Primary Teacher</i>	<i>October 2021</i>	<i>October 2022</i>
General Maintenance Activities	<i>Facility Manager</i>	<i>October 2021</i>	<i>October 2022</i>
IT Class Rooms	<i>N/A</i>	<i>-</i>	<i>-</i>
IT Technicians and Server Rooms	<i>IT Manager</i>	<i>October 2021</i>	<i>October 2022</i>
Kitchen	<i>H&S Coordinator Facility Manager</i>	<i>October 2021</i>	<i>October 2022</i>
Learning Support Classrooms	<i>N/A</i>	<i>-</i>	<i>-</i>
Library	<i>N/A</i>	<i>-</i>	<i>-</i>
Lone Working	<i>Human Resources</i>	<i>October 2021</i>	<i>October 2022</i>
Music Rooms	<i>Music Teacher</i>	<i>October 2021</i>	<i>October 2022</i>
Reception Areas	<i>H&S Coordinator Facility Manager</i>	<i>October 2021</i>	<i>October 2022</i>
Reprographics Areas	<i>IT Manager</i>	<i>October 2021</i>	<i>October 2022</i>
School Assembly Areas	<i>EYFS & Primary Headteacher</i>	<i>October 2021</i>	<i>October 2022</i>
School Transport	<i>School Transport Coordinator</i>	<i>October 2021</i>	<i>October 2022</i>
Science Laboratories and Preparation Rooms	<i>N/A</i>	<i>-</i>	<i>-</i>

Security Risk Assessment	<i>H&S Coordinator Facility Manager</i>	<i>October 2021</i>	<i>October 2022</i>
Sports Halls	<i>N/A</i>	<i>-</i>	<i>-</i>
Staffrooms	<i>H&S Coordinator Facility Manager</i>	<i>October 2021</i>	<i>October 2022</i>
Stairs and Communal Areas	<i>H&S Coordinator Facility Manager</i>	<i>October 2021</i>	<i>October 2022</i>
Storage Rooms	<i>H&S Coordinator Facility Manager</i>	<i>October 2021</i>	<i>October 2022</i>
Swimming Pools	<i>PE Teacher</i>	<i>October 2021</i>	<i>October 2022</i>
Toilets and Welfare Areas	<i>H&S Coordinator Facility Manager</i>	<i>October 2021</i>	<i>October 2022</i>
Traffic Management	<i>H&S Coordinator Facility Manager</i>	<i>October 2021</i>	<i>October 2022</i>
Use of Passenger Lifts	<i>H&S Coordinator Facility Manager</i>	<i>October 2021</i>	<i>October 2022</i>

ADDITIONAL RISK ASSESSMENTS – SPECIFIC TO THE SCHOOL			
School Policy and/or Guidance	Responsible Person / Department	Current Issue Date/Ref	Planned Review Date
<i>LRC (Year 7 innovation centre)</i>	<i>Head of Learning Support for Secondary. Deputy Safeguarding Lead for Secondary</i>	<i>October 2021</i>	<i>October 2022</i>
<i>Y6 Learning centre</i>	<i>Upper Key Stage 2 Leader</i>	<i>October 2021</i>	<i>October 2022</i>

Authorised by [School Head]: Jon Locke

Date	October 2021
Effective date of the policy	October 2021
Circulation	[Director of Education Spain/teaching staff/all non-teaching staff]
Status	Complies with requirements of the RD 486/97.

NOTE: This Health and Safety Policy document is subject to review and revision by Cognita, therefore please ensure that you are using the current correct version by checking with your school Head or their nominated Health and Safety Coordinator.

Ownership and consultation	
Document sponsor (role)	Director of Transformation & Operations Europe
Document author (name)	Head of Compliance Europe
Specialist Legal Advice	n/a
Consultation	Head of Educational Compliance Spain

Compliance	
Compliance with	RD 486/97

Audience	
Audience	Heads. All staff.

Document application	
England	No
Wales	No
Spain	Yes
Switzerland	No
Italy	No

Version control	
Implementation date	August 2016
Review date	August 2022

Related documentation	
Related documentation	Emergency and First aid related policies and procedures Facilities related policies and procedures